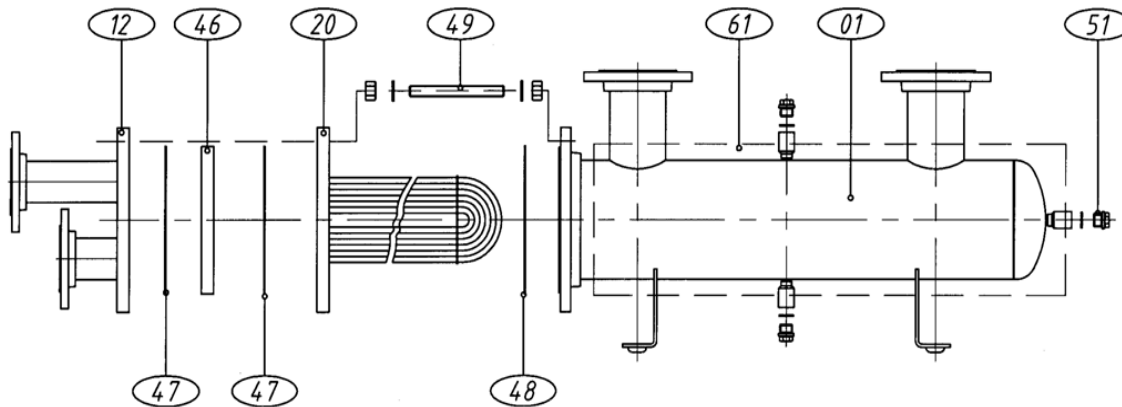


Spare parts V32 (2P-4P) (LP-HP)

V32



Pos.no	Description	Article no.	Drawing no.	Remarks	Material	Quantity	Packing	Weight	Price	Total
						*	* Dimens. cm	* Kg	* Euro	Quantity
46	Channel ring 2P	200046739	V32-74-001		C.Steel	Piece	40x25x30	8,00		
46	Channel ring 4P	200046750	V32-74-002		C.Steel	Piece	40x25x30	8,00		
47/48	Gasket set 2P	200014444			Novatec	Set of 3	60x50x2	0,45		
47/48	Gasket set 4P	200014445			Novatec	Set of 3	60x50x2	0,45		
49	Bolting complete	200046753		LP version	St.	Set of 12	25x25x7	10,00		
49	Bolting complete	200046754		HP version	St.	Set of 12	25x25x7	11,50		
51	Plug complete	200012617		1/2" BSP	St.	Set of 3	25x25x7	0,25		
01	Shell	**		Misc		Piece			On request	
12	Cover	**		Misc		Piece			On request	
61	Insulation	**		Misc		Piece			On request	
20	Tubestack	**		Misc		Piece			On request	

Repair and cleaning

Brush for tube 10mm	200014333					Piece	25x25x7	0,01		
Tube brush handle	200014335			L=1000mm		Piece	25x25x7	0,04		
Plug for tube 10mm	200012616					Set of 10	25x25x7	0,13		

Each total order amount below € 90,- will be extra charged with € 40,- handling costs

* All quantities, packing dimensions, weight, and prices per packaging unit

Please always mention nameplate data :	Bloksma drawing no.:
	Bloksma order no.:

Delivery : CIP (freight cost will be charged)
 (un)packed Almere Incoterms 2000
 Delivery time : Subject to availability / Art. ** on request
 Payment : Payment in advance of shipment
 or according Bloksma agreement.
 Validity of offer : 3 months
 Pricing : Based on delivery in 2011
 Your contact : Bloksma Service dept.
 Direct Tel : 0031-36-5291815
 Direct Fax : 0031-36-5492395
 E-Mail : GEA-Bloksma-Service@geagroup.com

Delivery address	
Signature client:	
Date:	

www.gea-bloksma.com

Tel. 0031 (0)36 5492300 - Fax 0031 (0)36 5492395

E-Mail: GEA-Bloksma-Service@geagroup.com

The data and information given is subject to change without prior notice.